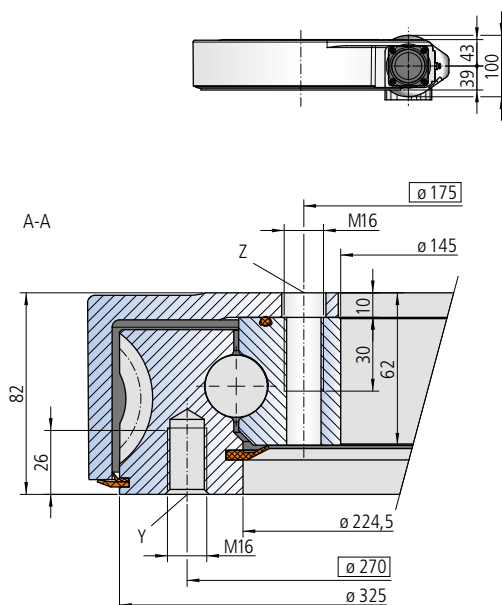
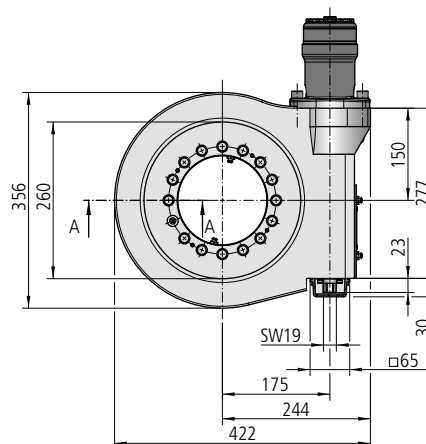


Size WD-L 0230 / 1-row / 1 drive



The mounting structure must support the housing to at least $\varnothing 230$ and at most to $\varnothing 329$



Mounting holes

Y = 16 drill holes M16-24 deep, evenly distributed

Z = 15 drill holes $\varnothing 18-10$ deep / M16-30 deep, evenly spaced over 16 pitch

Lubricating ports

2 conical grease nipples on internal diameter

2 conical grease nipples on housing exterior

Slew drive supplied pre-lubricated

Drawing number WD-L 0230/3-12519

Module	m	[mm]	5
Number of threads of the worm		[-]	1
Gear ratio	i	[-]	62
Self-locking gears			No**
Max. torque $s_f = 1$	M_{d max}	[Nm]	9303
Nom. torque $s_w = 1$ at $n = 1 \text{ min}^{-1}$	M_{d nom}	[Nm]	4795
Max. holding torque* $s_{f5} = 1$ (static)	M_{h max}	[Nm]	9303
Static load rating, radial	C_{o rad}	[kN]	328
Static load rating, axial	C_{o ax}	[kN]	878
Dynamic load rating, radial	C_{rad}	[kN]	186
Dynamic load rating, axial	C_{ax}	[kN]	216
Weight, incl. 6 kg for hydraulic motor OMP (X) 160		[kg]	55

* Optionally with brake

** See: Technical Information, section *Self-locking*

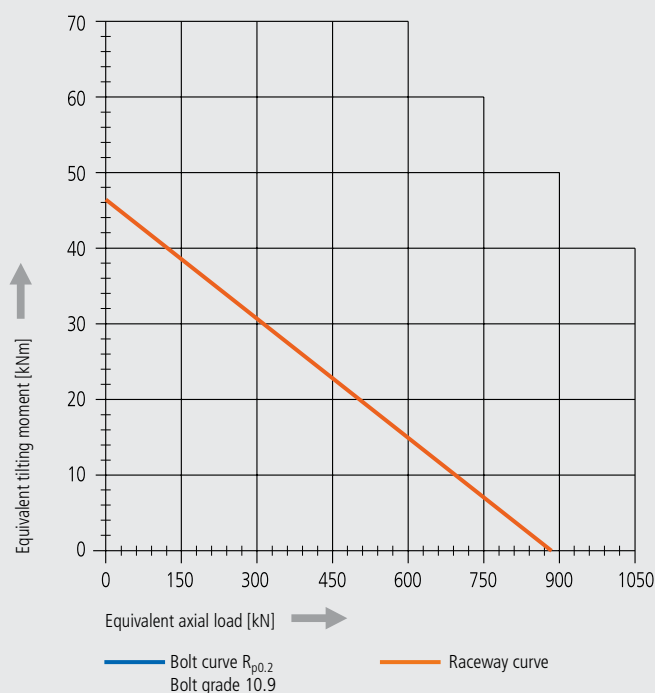
The hydraulic/electric motor is selected according to the actual requirements and customer specification.

Selection example:

Performance data with hydraulic motor OMP (X) 160

Pressure differential	Δp	[bar]	140
Oil flow	Q	[l/min]	14
Output speed	n	[min ⁻¹]	1
Max. achievable torque	M_d	[Nm]	9303

Limiting load diagram for compressive loads



Please always observe the technical information!